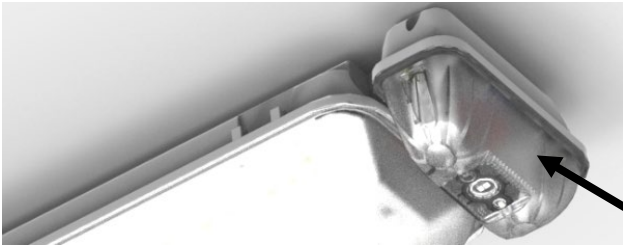


## L10™ Weatherproof Emergency Battens

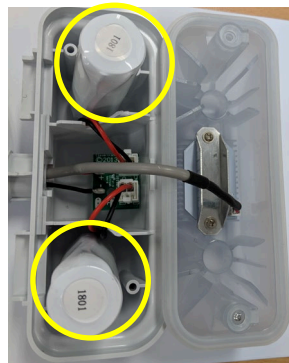
### Weather Proof Battens – Battery and LED Replacement



LED POD



LED POD location on batten



LED POD cover removed.  
Batteries highlighted



LED Head and Batteries  
LED screws highlighted

#### SPARES

Single LED PCB Assembly:	P/N: 8002145
Dual LED PCB Assembly:	P/N: 8050205
Battery :L10 3.3V 2.5AH	P/N: 1530050

#### BATTERY REPLACEMENT

1. Prior to any work, isolate the power to the luminaire that requires battery replacement
2. Remove the LED POD cover screws.
3. Remove the POD cover.
4. Disconnect battery from the interface PCB.
5. Install new batteries as required.
6. Refit the Pod Cover Seal
7. Reinstall the POD cover and screws.

#### LED REPLACEMENT

1. Prior to any work, isolate the power to the luminaire that requires LED replacement
2. Disconnect the LED cable from the LED PCB.
3. Remove the LED PCB screws.
4. Remove the heatsink and LED PCB.
5. Install replacement LED PCB and ensure that the seal is properly seated.
6. Refit the heat sink and LED PCB screws
7. Reinstall the LED cable
8. Refit the Pod Cover Seal
9. Reinstall the POD cover and screws

#### Note:

This luminaire contains non-user replaceable light source and battery - to be replaced (if required, refer installation instructions for battery replacement) by Clevertronics service personnel/agents or a registered electrician.

#### Important:

It is illegal for anyone, except for a licensed electrician to install or maintain this product. Before installation or maintenance, ensure that the electricity supply has been switched off and isolated. Installation must be carried out in accordance with the relevant British and International Standards.